



Nextend™

POSITIONING SYSTEM

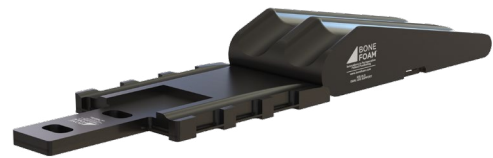
The Nextend Positioning System is an easy-to-use positioner for anterior cervical cases, most commonly ACDF. It consistently positions each patient and makes set-up time more efficient. The following steps illustrate the set-up process and ease of use:

1



Position The Nextend with narrow end towards anesthesia and secure to table with table strap

2



Place leg bolster just distal to the torso base and secure with table straps

3



Attach one side of the Y-strap that is opposite of the endotracheal tube with single-use padding facing up with long strap towards anesthesia

4



Prior to transferring patient, attach arm straps with abrasive velcro facing away from patient

5



Attach other side of Y-strap to avoid endotracheal tube, and flip Y-strap over patient

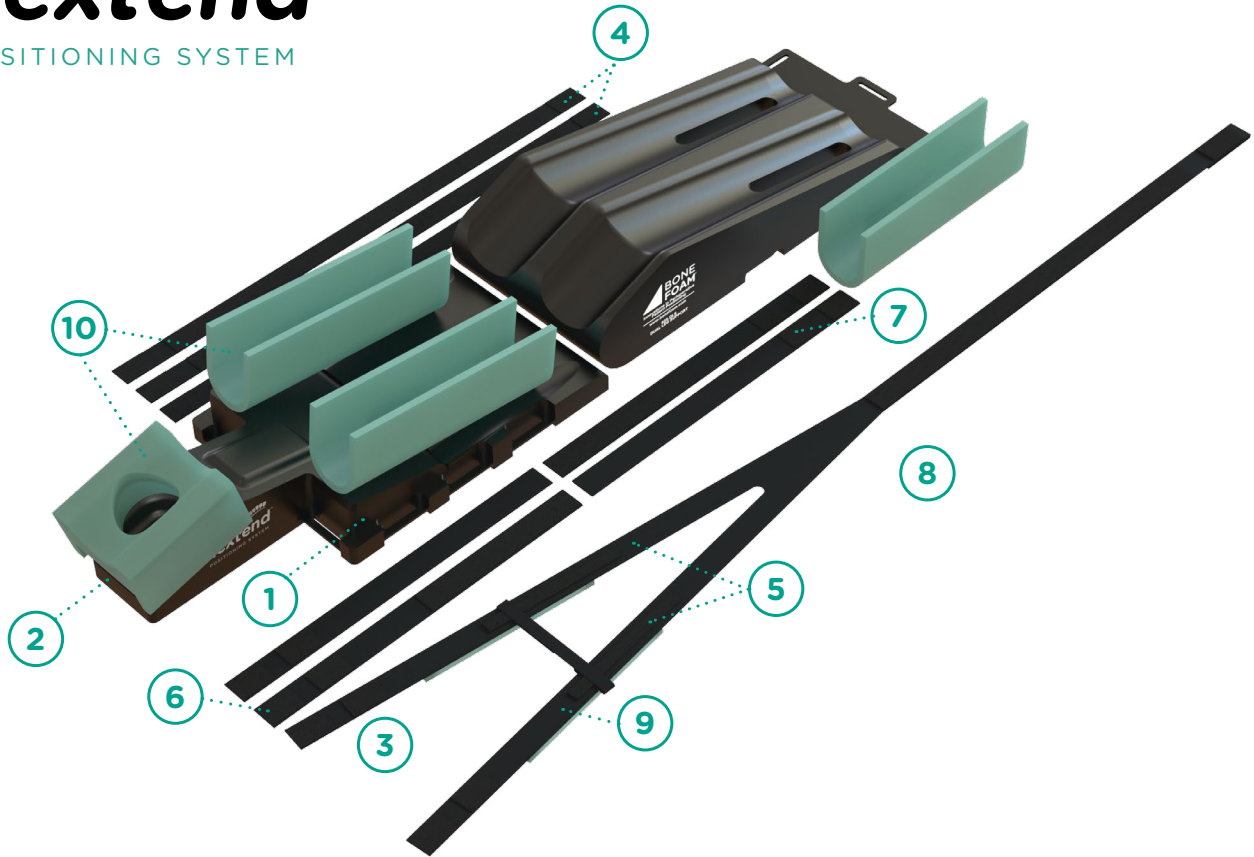
6



Ensure the shoulders and arms are well padded with single-use padding and adjust cervical position as needed with occipital bolster



Nextend[™]
POSITIONING SYSTEM



Item No.	SKU	Description	QTY.
1	104.NPS-TB	Torso Base	1
2	104.NPS-SB	Scapula Bolster	1
3	925.DLS	Dual Leg Support	1
4	925.TS	Table Strap	2
*5	104.NPS-STSY	Traction Strap Yoke	1
*6	104.NPS-BAS	Bottom Arm Strap	2
*7	104.NPS-TAS	Top Arm Strap	2
*8	104.NPS-STSS	Shoulder Traction Strap	1
*9	104.NPS-SP	Strap Padding	3
*10	104.NPS-SUP	Single Use Padding	4

*Included in Single Use Kit **#104.NPS-SUK**