



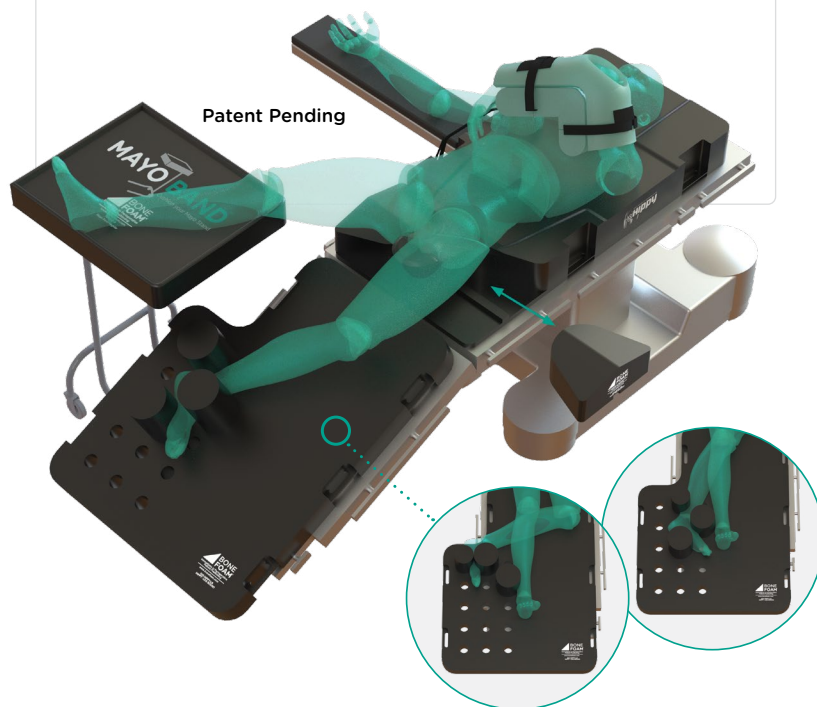
The Simplest Solution for Anterior Hip Positioning

Hippy™

Anterior Hip Positioning System

Bone Foam's new tabletop system simplifies patient positioning for anterior hip replacement on any operative table.

- Consistent, repeatable, and stable pelvic positioning easily mastered by all OR staff
- Reduce hospital cost with reusable postless design
- Increase surgical access to the acetabulum with removable hip bolsters
- Decrease OR prep time with an efficient method for patient positioning



*Anterior hip trends suggest from 2009-2018, the use of DA THA approach increased by 28%, while posterior approach decreased by 18%**

An innovative tabletop system that consistently and accurately positions patients for anterior hip arthroplasty.

The postless design reduces injury risk to the perineum while stabilizing the pelvis and torso. The Hippy has bilateral removable hip bolsters which improve surgical access to the acetabulum and creates a stable pelvis for cup impaction. Memory foam padding and base contour safely cradles the patient throughout the case.

Fit Your Surgical Technique

Optional Leg Board for precise lower extremity positioning that can be customized for surgeon preference.

**Hippy Anterior Hip Positioning System
#925.HIPPY-BP**

* "Current Practice Trends in Primary Hip and Knee Arthroplasties Among Members of the American Association of Hip and Knee Surgeons: A Long-Term Update" Abdel, Matthew P. et al. *The Journal of Arthroplasty*, Volume 34, Issue 7, S24 - S27

The Hippy allows dynamic motion of the hip and facilitates intraoperative assessment of stability, impingement, and ROM during direct anterior hip procedures.

Elevated Non-Operative Leg

Optional add-on that includes Bone Foam Mayo Band™ for surgeons who prefer to elevate the non-operative leg on a Mayo stand

Hippy Anterior Hip Positioning System
#925.HIPPY-BP



Postless Distraction

Multilayer foam base cradles and stabilizes the patient's torso, providing counter traction during distraction without the use of a post.

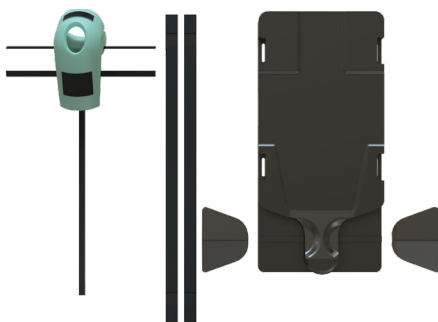
Pelvis Stabilization

Stable and consistent positioning for patients of all sizes.

Surgical Site Access

The hip bolster can be removed after intubation and improves access to the acetabulum during cup impaction.

Hippy Positioning System Includes:



Torso Base with 2 Removable Hip Bolsters

Comfortably positions the torso and improves access to the acetabulum.

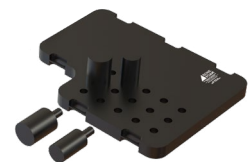
2 Disposable Single Arm Supports with Straps

Two-piece base and shell design that safely stabilizes the arm across the chest. Adjustable strap secures arm away from surgical field.

Reorder: #925.SAS

2 Table Straps

Adjustable straps to secure the base and leg board to the OR table.



Leg Board (optional add on)

Use various configurations to stabilize and maintain lower extremity position.